



## AUSTRALIAN COLOUR SELECTOR



**OXYTECH<sup>®</sup>**  
POWDER COATINGS  
*Supplying Oxyplast to Australia*

# DECORATION, DURABILITY & VERSATILITY

Powders built to suit the Application

**Oxyplast Powder Coatings** have developed PR and PE polyester grade products to suit multiple substrates. Powders specifically designed for aluminium cannot offer the qualities or protection provided by a truly versatile product when used on varying materials. **Oxytech®** can provide a single product which offers a decorative and durable finish across a broad range of materials such as architectural aluminium, structural steel, zinc coated steel, media-blasted metals, steel and alloy castings and many other ferrous and non ferrous substrates. Each product is manufactured to give superior coverage, hiding power and luxurious finish with the added benefits of “**out-gassing tolerance**” for porous surfaces and “**advanced edge film-build**” on sharp edges offering crucial protection for Australia's harsh environment. The use of high performance pigments and resins present excellent UV stability and ensure that a superior product is produced every time.

**Oxytech®** recommends using a suitable powder primer as part of the coating process to maximise the life span of the coated finish. All Oxyplast primers supplied by Oxytech® offer the same “out-gassing tolerance” and “advanced edge film-build” as the PR and PE polyester powder coatings with the added strength of epoxy resin systems. Oxyplast ‘**Zincoprime**’ is a zinc-rich epoxy primer which provides very good corrosion resistance when applied over media-blasted steel. Oxyplast ‘**Epoxyprime**’ is a pure epoxy primer for long term use over aluminium and zinc coated steel. These primers are highly recommended for extensive heavy industrial and environmental applications.

		FILM THICKNESS - MICRONS (µm)									
COLOUR	S.G.	40	45	50	55	60	65	70	75	80	
TRANSPARENT POWDERS	1.20	21	18	17	15	14	13	12	11	10	
	1.26	20	18	16	15	13	12	11	11	10	
BLACK COLOUR POWDERS	1.30	19	17	15	14	13	12	11	10	10	
	1.40	18	16	14	13	12	11	10	10	9	
	1.45	17	15	14	13	11	11	10	9	9	
GENERAL COLOURS	1.50	17	15	13	12	11	10	10	9	8	
	1.55	16	14	13	12	11	10	9	9	8	
	1.60	16	14	12	11	10	10	9	8	8	
	1.65	15	13	12	11	10	9	9	8	8	
HIGH DENSITY POWDERS	1.70	15	13	12	11	10	9	8	8	7	
	1.75	14	13	11	10	10	9	8	8	7	

COVERAGE - SQ METRES PER KG

$$\text{Coverage of Powder (sq metres per kg)} = \frac{1000}{\text{S.G.} \times \text{Film Thickness (}\mu\text{m)}}$$

## BUCKET 'N' SPONGE

Looking after the finished product.

Maintain both the aesthetic and functional properties of your powder coated finish by regularly cleaning the coated surfaces every six months. In harsher environments with high levels of salts or pollutants such as coastal or industrial areas, cleaning should be as frequent as every three months. This will keep your powder coatings looking good for many years to come.

Cleaning is simple...

1. Remove coarse or loose dirt with a soft wet sponge or cloth.
2. Wash the powder coated finish with a warm, mild detergent solution to remove any salt, dust and other deposits with a soft cloth, sponge or brush.
3. After cleaning, rinse the coating with clean, fresh water.

Be careful not to damage the coating surface during cleaning by using harsh materials and cleaners such as steel wool, scouring pads, scrapers, abrasive liquids or powders. Using such cleaning products will scratch and dull the powder coated finish. If solvents must be used, mild solvents such as Isopropanol, White Spirits or Turpentine are recommended. Always test a small, unseen area of the coating prior to cleaning with solvents.



# Switched On<sup>®</sup>

## Industrial Switchgear Colours



**RAL 7035 Light Grey**  
PR12/60978/CS1 Satin



**RAL 7035 Light Grey Wrinkle**  
PR12/60978/CW2



**RAL 7032 Pebble Grey**  
PR12/60232/CS2 Satin



**RAL 7032 Pebble Grey Wrinkle**  
PR12/60232/CW3



**X15 Orange**  
PR12/6191/CS9 Gloss



**X15 Orange Wrinkle**  
PR12/6191/CW66



**G32 Opaline**  
PR12/20837/C8 Gloss



**G55 Lichen Green**  
PR12/20515/C6 Gloss



**T45 Cootamundra**  
PR12/20835/C14 Gloss



**B25 Aqua**  
PR12/30131/C3 Gloss



**N35 Light Grey**  
PR12/60233/CS2 Satin



**N42 Storm Grey**  
PR12/60242/C3 Gloss



**G44 Palm Green**  
PR12/20620/C10 Gloss



**G22 Serpentine**  
PR12/20836/C9 Gloss



**G34 Avocado**  
PR12/20237/C13 Gloss

**OXYTECH<sup>®</sup>**  
POWDER COATINGS

*Supplying Oxyplast to Australia*

# Traditional Living<sup>®</sup>

## Australia's Lifestyle Essentials



**Surfmist (Off White)**  
PR12/4761/CS3 Satin



**Moss Vale Sands**  
PR12/60185/CS5 Satin



**Dover White**  
PR12/4526/C2 Gloss



**Paperbark (Merino)**  
PR12/70307/CS16 Satin



**Domain (Primrose)**  
PR12/70289/CS3 Satin



**Gull Grey (Shale Grey)**  
PR12/60464/CS6 Satin



**Birch Grey (Dune)**  
PR12/60545/CS2 Satin



**Riversand (Stone)**  
PR12/90157/CS2 Satin



**Harvest (Wheat)**  
PR12/70309/CS2 Satin



**Armour Grey (Windspray)**  
PR12/80745/CS4 Satin



**Jasper (Mocca)**  
PR12/90408/CS6 Satin



**Estate (Ironbark)**  
PR12/20372/CS12 Satin



**Picton Green (Bronze Olive)**  
PR12/20375/CS6 Satin



**Tea Tree (Bushland)**  
PR12/80361/CS16 Satin



**Woodland Grey (Slate Grey)**  
PR12/80358/CS7 Satin



**Ironstone (Grey Rock)**  
PR12/80573/CS8 Satin

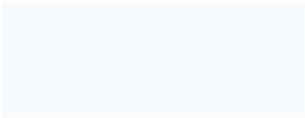


**Blue Ridge (Blue Metal)**  
PR12/30384/CS5 Satin

Many of Oxytech's Traditional Living<sup>®</sup> colour range are designed to harmonise with pre-coated coil steel.

# Chromatic Colour®

## Spectrum of Colour



**Bright White**  
PR12/4429/CS1 Gloss



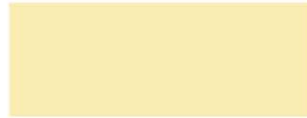
**RAL 9010 Pure White**  
PR12/4249/CS1 Satin



**White Birch**  
PR12/70229/C11 Gloss



**Magnolia**  
PR12/9695/C8 Gloss



**Primrose**  
PR12/70437/C13 Gloss



**Stone Beige**  
PR18/90492/CM11 Matt



**Pearl White**  
PR12/4370/C4 Gloss



**Shoji White**  
PR12/4752/CS10 Satin



**Rivergum Beige**  
PR12/70217/C1 Gloss



**Pottery**  
PR12/90314/C1 Gloss



**Satin White**  
PR12/4371/CS1 Satin



**Horizon White Wrinkle**  
PR12/4573/CW3



**Oyster**  
PR12/60420/CS2 Satin



**APO Grey**  
PR12/60169/CS2 Satin



**White Texture**  
PR12/4431/CT3



**Oxytec Off White**  
PR16/70553/CM3 Matt

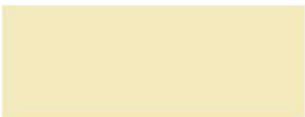


**Oyster Wrinkle**  
PR12/60420/CW3



**APO Grey Wrinkle**  
PR12/60480/CW2

PH: 1300 353 655



**Classic Cream (Smooth Cream)**  
PR12/70242/CS2 Satin



**Wilderness (Rivergum)**  
PR12/20207/CS2 Satin



**Pale Terracotta**  
PR12/90346/CS13 Satin



**Federation Red**  
PR12/5399/C8 Gloss



**Mist Green (Pale Eucalypt)**  
PR12/20209/CS4 Satin



**Heritage Green**  
PR12/20381/C22 Gloss



**Tuscan Red (Headland)**  
PR12/5535/CS15 Satin



**Loft (Merlot)**  
PR12/90709/CS3 Satin



**Cottage Green (Caulfield Green)**  
PR12/20546/CS2 Satin



**Hedge (Plantation)**  
PR12/20376/CS27 Satin



**Heritage Red (Manor Red)**  
PR12/5363/CS13 Satin



**Monument (Coke)**  
PR12/81082/CS4 Satin



**Cappice (Weathered Copper)**  
PR12/90465/CS5 Satin



**Bowral Brown**  
PR12/90160/CS4 Satin



**Hunter Red**  
PR12/5387/C15 Gloss



**Satin Black**  
PR12/7087/CS1 Satin



**Bluestone (Deep Ocean)**  
PR12/30330/CS10 Satin



**Charcoal**  
PR12/80237/C7 Gloss



**Claret**  
PR12/5362/CS4 Gloss



**Jet Black (RAL 9005)**  
PR12/710/C42 Gloss

Please allow for some colour variation between the coated coil steel and powder coated finish due to the different coating application processes.



**Oxytec Silver Grey**  
RPR12/80973/CM3 Matt



**Periwinkle**  
PR12/60397/C3 Gloss



**Hunter Blue (RAL 5012)**  
PR12/30670/CS5 Satin



**Mint Green**  
PR12/2399/C10 Gloss



**Olde Pewter**  
PR12/80416/CS4 Satin



**T33 Smoke Blue**  
PR12/30003/C2 Gloss



**Blaze Blue**  
PR12/30075/C5 Gloss



**Cabana Green**  
PR12/20357/C19 Gloss



**Pewter Grey Texture**  
PR12/80332/CT8



**Wizard**  
PR12/30284/CS8 Satin



**French Blue**  
PR12/30213/C3 Gloss



**Brunswick Green**  
PR12/20452/C1 Gloss



**Notre Dame**  
PR12/60310/C11 Gloss



**Navy**  
PR12/30267/CS3 Satin



**Space Blue**  
PR12/30733/C4 Gloss



**Hawthorn Green**  
PR12/20470/C22 Gloss



**Berry Grey**  
PR12/80662/CS4 Satin



**Oxytec Dark Grey**  
PR18/80495/CM9 Matt



**Torres Blue**  
PR12/30191/CS4 Satin

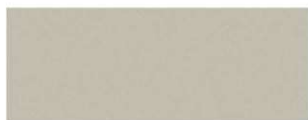


**Deep Brunswick Green**  
PR12/20222/C10 Gloss

*"The Chosen Finish"*

## Classic Flair®

Colours that Sparkle and Shine



**Oxytec Citi Pearl**  
RPR16/80827/CM3 Matt



**Camden Silver\***  
QPR12/11091/C7 Gloss



**Oxytec Silver Pearl**  
QPR12/11168/CS46 Satin



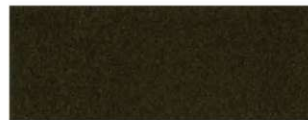
**Oxytec Silver Lustre**  
RPR16/60670/CM3 Matt



**Silver Gloss**  
RPR12/11060/C7 Gloss



**Oxytec Nepean Silver\***  
QPR12/11094/CS14 Satin



**Colonial Bronze**  
QPR12/90443/C27 Gloss



**Oxytec Gold**  
RPR12/1319/C13 Gloss



**Bright Silver\***  
QPR12/11109/CS55 Satin



**Oxytec Mahogany Pearl**  
RPR12/90551/C4 Satin



**Oxytec Metallic Pearl**  
RPR16/90549/CM3 Matt



**Black Onyx**  
RPR12/708/CS113 Satin



**Silver Texture**  
QPR12/11001/CT6



**Charcoal Metallic Pearl**  
RPR12/80960/C14 Gloss



**Hammerstone Silver Grey**  
WPR12/1122/CH2 Gloss



**Hammerstone Black**  
WPR12/1948/CH8 Gloss

\* Denotes products that require a clear topcoat for exterior or high-wear use.





**Lawn Green**  
PR12/20428/C13 Gloss



**Bistro Orange**  
PR12/6186/C35 Gloss



**Terracotta**  
PR12/90313/CS5 Satin



**Coffee**  
PR12/90494/CS17 Satin



**Turquoise**  
PR12/20447/C14 Gloss



**R11 International Orange**  
PR12/6159/C29 Gloss



**Vincent Brown**  
PR12/90162/CS3 Satin



**Hammersley Brown**  
PR12/90371/CS5 Satin



**Lemon Yellow**  
PR12/58094/C10 Gloss



**Pink Blush**  
PR12/5701/C11 Gloss



**Deep Charcoal**  
PR12/80359/C5 Gloss



**Auto Matt Black**  
PR18/7120/CM3 Matt



**Golden Yellow**  
PR12/134/C36 Gloss



**R13 Signal Red**  
PE50/5347/C22 Gloss



**Black Texture (Interior)**  
FF165/737/CT4



**Black Custom**  
PR12/708/CS102 Satin



**Y14 Traffic Yellow**  
PR12/58128/C21 Gloss



**Flame Red**  
PR12/5225/C33 Gloss



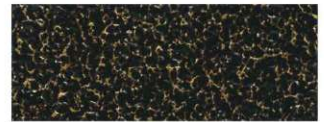
**Antique White\***  
QPR12/4465/CA5



**Antique Light Silver\***  
QPR12/1410/CA2



**Antique Dark Silver\***  
QPR12/1410/CA7



**Antique Gold\***  
RPR12/1432/CA8



**Silver Wrinkle\***  
QPR12/1148/CA5



**Graphite Wrinkle (Interior)**  
QFF175/1417/CA57



**Ebony Black Texture**  
PE50/7160/CT5



**Black Wrinkle**  
PR12/7112/CW1 Gloss

## Work Mates<sup>®</sup> Vehicle and Equipment Colours



**Bright Red**  
PR12/5691/C3 Gloss



**Colorado White**  
PR12/4610/CS5 Satin



**040 White (Toyota<sup>®</sup>)**  
PR12/4726/CS3 Satin



**058 White (Toyota<sup>®</sup>)**  
PR12/4520/CS9 Satin



**Dozer Yellow (Caterpillar<sup>®</sup>)**  
PR12/90717/C4 Gloss



**JD Yellow (RAL 1018)**  
PR12/159/C46 Gloss



**Alpine White (Isuzu<sup>®</sup>)**  
PR12/4651/C7 Gloss



**Cool White (Ranger White)**  
PR12/4801/CS6 Satin



**JD Green**  
PR12/20726/C Gloss



**Olive Drab**  
PR18/20427/CM8 Matt

<sup>^</sup>Denotes the vehicle manufacturer from which the colour was matched by Oxytech<sup>®</sup>. Toyota<sup>®</sup> is a trademark of Toyota Jidosha Kabushiki Kaisha, Isuzu<sup>®</sup> is a trademark of Isuzu Jidosha KK, Caterpillar<sup>®</sup> is a trademark of Caterpillar Inc and no rights in the formerly mentioned marks are claimed by Oxytech Powder Coatings Pty Ltd.

# OXYPLAST POWDER COATINGS PRODUCT RANGE

TYPE	GRADE	GLOSS AT 60°	CURING SCHEDULE	DESCRIPTION
<b>EPOXY</b> -For Interior-	E6	Super Matt 1-5%	200°C / 10 min	Excellent flow-out
	E8	Matt 10-18%	200°C / 10 min	Excellent flow-out
	E5	Matt 20-30%	200°C / 10 min	Excellent flow-out
	E29	Satin-Glossy 60-100%	180°C / 10 min	Very good flow-out E29 Zincoprime: Anti-corrosion primer
	E39	Satin-Glossy 60-100%	200°C / 20 min	Electronic and electrical insulation coating
	E61	Satin-Glossy 70-100%	160°C / 10 min	Outstanding chemical, mechanical and corrosion resistance FDA compliance
<b>HYBRID</b> <b>EPOXY-POLYESTER</b> -For Interior-	FF4	Matt 13-25%	180°C / 10 min	Good flow-out
	FF6	Matt 5-10%	200°C / 10 min	Excellent flow-out
	FF160	Satin-Glossy 50-95%	180°C / 10 min	Very good flow-out Good overbake resistance and excellent mechanicals
	FF165	Matt-Satin 30-45%	180°C / 10 min	Excellent flow-out
	FF175	Matt 13-25%	180°C / 10 min	Very good flow-out
	FF190	Matt-Satin 15-45%	190°C / 10 min	Excellent flow-out Improved overbake resistance compared to matt hybrids
	SP	Matt (Moire) 1-10%	200°C / 10 min	Moire finish ("Water Silk") Excellent mechanicals
<b>POLYESTER</b> -For Exterior-	PE50	Satin-Glossy 50-95%	180°C / 10 min	Standard durable TGIC-free
	PR10	Matt 5-25%	200°C / 10 min	Standard durable
	PR12	Matt-Glossy 25-95%	200°C / 10 min	Standard durable Architectural and general industrial
	PR16	Matt-Satin 15-35%	200°C / 10 min	Standard durable Good finish
	PR18	Matt-Satin 15-40%	200°C / 10 min	Standard durable Very good finish
	PR28	Glossy 90-100%	200°C / 10 min	Standard durable Clear-coat
	APR	Matt-Glossy 25-95%	200°C / 10 min	Super durable Architectural
	SPR	Satin-Glossy 50-95%	200°C / 10 min	Super durable Architectural
<b>FLUORO-POLYMER</b> -For Exterior-	SOLAR-HYD	Matt-Satin 25-70%	200°C / 15-20 min 205°C / 12-15 min	Hyper durable Thermosetting fluoro-polymer
<b>POLYURETHANE</b> -For Exterior-	PU1	Satin-Glossy 50-95%	200°C / 10 min	Standard durable Enhanced chemical resistance
	PU5	Glossy 85-95%	210°C / 10 min	Standard durable Anti-graffiti properties, excellent chemical resistance

**OXYTECH®**  
POWDER COATINGS

**Oxytech Powder Coatings Pty Ltd**  
ABN: 19 131 156 217

PO Box 149,  
Horsley Park, NSW 2175

**Aust. Wide: 1300 353 655**

[www.oxytech.com.au](http://www.oxytech.com.au)

Switched On®, Chromatic Colour®, Traditional Living®, Classic Flair®, Work Mates® and Oxytech® are all trademarks of **Oxytech Powder Coatings Pty Ltd**.

Colours displayed in the "Australian Colour Selector" are indicative only. Colour samples have been matched as close as possible to powder coated samples provided by Oxytech®, using modern printing processes. If a more accurate product sample is required please request a powder coated colour swatch from **Oxytech Powder Coatings Pty Ltd on 1300 353 655**.

All images displayed on the "Australian Colour Selector" are provided by clients of Oxytech® and are examples of where **Oxyplast Powder Coatings** can and have been used.

The information provided in the "Australian Colour Selector" is provided for reference only and is correct at the time of print. For further information about products please contact Oxytech® on 1300 353 655 or [www.oxytech.com.au](http://www.oxytech.com.au).

Australian Colour Selector- 1st Edition, Printed 2010  
©Copyright 2010 Oxytech Powder Coatings Pty Ltd



## RAL EFFECT RANGE

490 COLOURS  
RAL E1 PRIMARY STANDARDS  
RAL K2 FAN DECK  
RAL EFFECT A6 SINGLE SHEETS



RAL E2 FAN DECK



RAL K5 FAN DECK

## RAL CLASSIC RANGE

210 COLOURS  
RAL K1 BOOKLET  
RAL K5 FAN DECK  
RAL K7 FAN DECK  
RAL K6 A4 SHEETS  
RAL F5 INFORMATION CARD  
RAL 840-HR & 841-GL PRIMARY STANDARDS

## RAL DESIGN RANGE

1625 COLOURS  
RAL D2 FAN DECK  
RAL D4 ATLAS  
RAL DESIGN A6 SINGLE SHEETS  
RAL DESIGN A4 SINGLE SHEETS



RAL D4 ATLAS

FOR MORE INFORMATION ON RAL COLOURS  
AND OTHER AVAILABLE PRODUCTS:

[WWW.RALCOLOURS.COM.AU](http://WWW.RALCOLOURS.COM.AU)

PH: 1300 353 655

RAL COLOURS  
RAL gGmbH

